
SECURITY



AIRPORTS . MILITARIES . CITY CONTROL . MALLS
STADIUMS . BANKS . PORT AUTHORITIES

PMC

BARRIER WALLS . BENCHES . BOLLARDS . PLANTERS . WASTE RECEPTACLES

PETERSEN

SECURITY YOU CAN COUNT ON

Public safety and the protection of unwanted access to our buildings has become a part of our lives. Petersen Manufacturing security products can provide the strength, flexibility and aesthetic values needed in precast barriers. Choose from many styles of planters, bollards, walls and benches. Finish options include many colors, light sand blast and exposed aggregate textures (see back page for a complete listing). Custom specifications are welcome. Call Petersen Manufacturing Co. Inc., At 1-800-832-7383 or see our web site www.petersenmfg.com for details.

PMC

WHEN SECURITY MATTERS MOST



LARGE PLANTERS WITH EXTREME WEIGHTS CAN PROVIDE MAXIMUM SECURITY

PETERSEN
CONCRETE SECURITY
1-800-832-7383

SECURITY



Pittsburgh Steelers Stadium



Air & Space Museum, Dulles, VA

The strategic placement of precast Concrete planters, bollards and benches creates a secure barrier. Green and flowering plants combined with pleasant resting places can soften the look of a secure barrier.

PETERSEN
CONCRETE SECURITY
1-800-832-7383

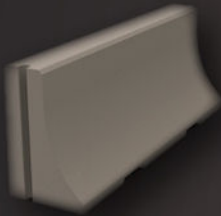
BARRIER WALLS



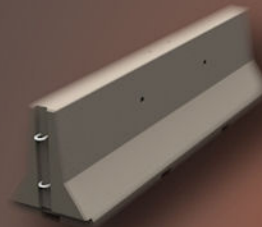
AB96
96X96X48



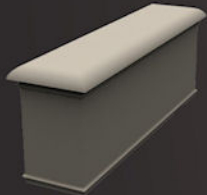
BWS3
120X120X60



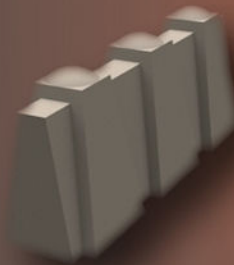
BWS1
24X34X96
24X34X120
24X34X144



JBSE
27X32X96
27X32X120
27X32X144



AURORA
24X36X96
24X36X120
24X36X144



TYPE3
24X36X96
24X36X120
24X36X144



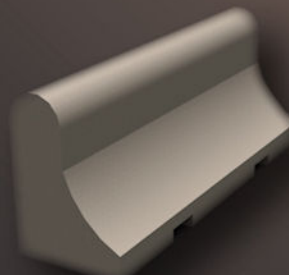
VB
24X34X96
24X34X120
24X34X144



TYPE4
24X36X96
24X36X120
24X36X144



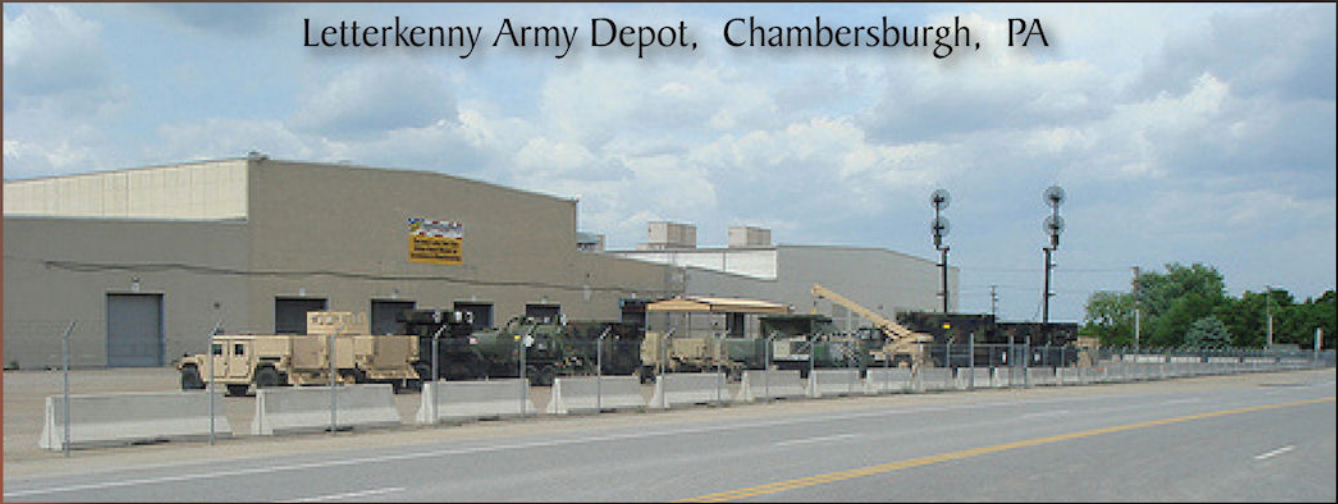
TYPE2
24X34X96
24X34X120
24X34X144



TYPE1
24X34X96
24X34X120
24X34X144

SECURITY

Letterkenny Army Depot, Chambersburgh, PA



Deter vehicle traffic and increase security around your facility with concrete barrier walls. Reinforced rebar construction in a variety of colors will provide years of low maintenance and compliment any environment.

Barrier walls come in all colors and textures, finished and straight ends available upon customer request.



PETERSEN
CONCRETE SECURITY
1-800-832-7383

SECURITY

Ronald Reagan Building & International Trade Center, Washington, DC



PLANTERS

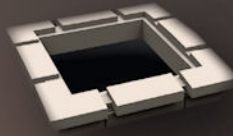
VP 82X82



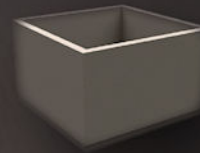
ACPL60



HENNEPIN



P48X30



WHEATLAND



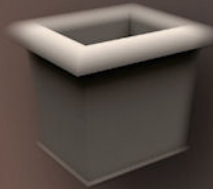
ARTISAN



AURORA
ROUND



AURORA
SQUARE



CAPISTANI CHEYENNE



DAVENPORT



FABRES



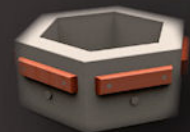
FLUTED



HAMPTON



HPW



LLP



LP



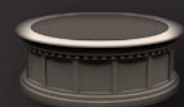
ROMAN



SEDONA



VICTORIAN



Create a safe atmosphere. Planters have a dual function serving as barriers and creating an inviting scenery when filled with lavish greenery of floral arrangements.

Above are just a few of our models, we do many custom shapes, colors and textures. Please call for complete catalog and spec CD at 1-800-832-7383. Or visit our web site at www.petersenmfg.com

PETERSEN
CONCRETE SECURITY
1-800-832-7383

SECURITY



Ft. McPherson, Columbus, GA



Coor's Field, Denver CO



PETERSEN
CONCRETE SECURITY
1-800-832-7383

BOLLARDS

CO18



BON BON



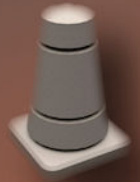
CR44



DF-AL-2L



MDB



BLT



BC



BB24



AL1



AL2



AE48



PC36



SB36



UM48



C1



B3



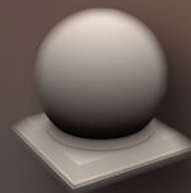
CNN



BP



SPH48



SECURITY

Canadian Embassy, Washington, D.C.



Bollards can be ordered to match existing planter styles or customized for your site.

For more information please call 1-800-832-7383

Petersen Mfg. Co., Inc
712 293-2442 1-800-832-7383 Fax 712 293-2090 www.petersenmfg.com

Bollard Anchoring Options

Option A (only model bollard) **Option B** (only model bollard) **Option C** (only model bollard)

Elevation

Bottom/Plan

Existing Pod (by others)

Option A: Bollard is precast with hollow core. Dimensions of this core are pre-determined by the contractor, and need to be specified when placing order. Existing pad, slab, or sidewalk is cast with exposed vertical tubing or pipe to fit inside the core of bollard. Before bollard is set on exposed tube on the existing pad, epoxy, caulk, or other bonding agent is applied to core and/or vertical pipe for securing purposes. The bollard is then set in place.

Option B: Bollard is precast with pipe or tube protruding from bottom of bollard. Dimensions of protruding pipe or tube are pre-determined by the contractor, and need to be specified when placing order. Existing pad, slab, or sidewalk is cast with sleeve correlating to protruding pipe on bottom of bollard. Before bollard is set, epoxy, caulk, or other bonding agent is applied to either the tube or pipe, and/or applied into the sleeves in the existing pad. The bollard is then set in place.

Option C: Bollard is precast with a predetermined number and pattern of inserts into the bottom of the bollard. Size and pattern of inserts are determined by the contractor, and need to be specified when placing order. The existing pad, slab, or sidewalk is cast with sleeves correlating to the inserts in the bottom of the bollard. Threaded rods (included with purchase of bollard) are then screwed into the inserts in the bottom of the bollard. Epoxy, caulk, or other bonding agent is applied to the rod and/or into the sleeves in the existing pad, and the bollard is set in place.

Note: Option C is the most widely used method of anchoring bollards.



Madison Square Garden, New York

For a complete line of our security street furniture please visit our web site at www.petersenmfg.com or call 1-800-832-7383.

PETERSEN
CONCRETE SECURITY
1-800-832-7383

COLORS AND FINISHES

A - Smooth Finishes Available for Precast Concrete or GFRC



Sand Tan



Dove Gray



Lite Brown



Terra Cotta



Custom Snow
white

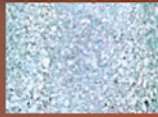
B - Exposed Aggregate For Precast Concrete



Dura Brite



Perma Stone



Slate Stone



Sand Tan
Etch



Gray Etch



Lite Brown
Etch

C - Lite Sand Blasted Textures For Precast Concrete or GFRC



Sand Tan
LSB



Gray LSB



Lite Brown
LSB

Concrete Stain available on smooth surfaces. Custom colors and textures available upon request.

Note: Color will vary slightly in brochure compared to actual product. Samples upon request.

FOR OUR COMPLETE CATALOG OF SITE FURNISHINGS CALL 1-800-832-7383

GENERAL SPECIFICATIONS

I. **Manufacturer's Qualification** - Petersen Mfg. Maintains at all times a quality control program as herein outline so as to insure that all precast meets all requirements as specified under physical requirements. All precast shall be manufactured by skilled workmen who have had at least five years experience in similar work and supervised by foremen certified by the ACI.

II. **Manufacturing** - All precast work shall be true to dimension and have clean, accurate arises and details faithful executed. Reinforcing steel shall conform to ASTM 615 and deformations shall conform to ASTM-M-305. All precast work shall have a minimum compressive strength of 5,000 psi at 28 days of age when tested by means of cylinder molds (6x12) from the materials. There shall be a maximum of 4-6% air entrainment for all precast according to ASTM standards.

III. **Molds** - The forms for the precast units shall be constructed of laminated metal or fiberglass designed to withstand casting pressures without distortion. All anchor, inserts, bolts, etc. Will be placed and secured in the forms as required for the attachment and handling of the units. These shall be clamped so as the hold the in position during fabrication.

IV. **Physical Characteristics** - All exposed surfaces are treated to remove the surface matrix and expose the aggregate produced by chemical retardant - not sandblasting. All precast shall have the water repellent sealer treatment applied in strict accordance with manufacturer's specifications. All tolerances shall be within 1/8" of specified dimensions, designed for structural analysis and calculations.

V. **Color** - Color to be uniform throughout as approved by owner or specifier in accordance with manufacturer's recommendations.

VI. **Materials** - Portland Cement: ASTM C150 Type I or 3ALL aggregate to meet ASTM C33 specifications.

VII. **Required Materials For Approval** - A. Shop drawings with dimensions, general construction component parts, anchoring details and installations. B. Samples upon request of architect. C. Complete date on manufacturer's specifications and technical information.

VIII. **Approved Manufacturer:**
Petersen Concrete Leisure Products
Division of Petersen Mfg. Company, Inc.
2475 Hwy 30 P.O. Box 664
Denison, Iowa 51442 - 712-263-2442

PETERSEN CONCRETE SECURITY

P.O. Box 664 - Denison Ia 51442
712-263-2442 - Toll Free: 1-800-832-7383
FAX: 1712-263-5090 - EMAIL: Sales@Petersenmfg.com
www.Petersenmfg.com